

DMS Wireless

5150-5850 MHz 90° HV-POL

Electrical Data

| | |
|-----------------------|----------------------------------|
| Frequency: | 5150-5850 MHz |
| Gain: | 16 dBi |
| VSWR: | <1.8:1 |
| Polarization: | Horizontal and Vertical |
| Horizontal Beamwidth: | 90°(3dBi) |
| Vertical Beamwidth: | 7° |
| Front-to-back ratio : | >25dB |
| Isolation: | >30dB |
| Cross-polar ratio: | >15dB ($\pm 60^\circ \geq 10$) |
| Impedance: | 50 Ohms |
| Max Input Power: | 100W |
| Lightning Protection: | DC Ground |

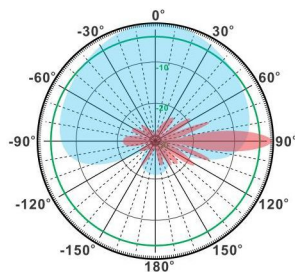
Mechanical Data

| | |
|------------------------|-------------------|
| Connector : | 2*SMA Female |
| Connector position: | Bottom |
| Dimensions: | 400*115*55mm |
| length*width*height | 15.7*4.5*2.2in |
| Weight: | 1.3kg/2.9lb |
| Reflector Material: | Aluminum Alloy |
| Radome Material: | UV Resistance PVC |
| Mounting Method: | Mast |
| Mast Size: | Ø40-Ø70mm |
| Rated Wind Velocity: | 210km/h |
| Operating temperature: | -40~+65°C |

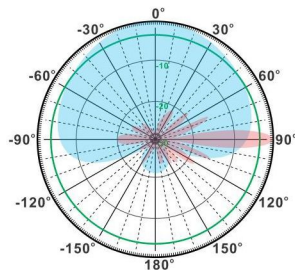
Shipment Data

| | |
|-----------------------|------------------|
| Packing Qty: | 4pc/Carton |
| Carton Size: | 470*360*300mm |
| (length*width*height) | 18.5*14.2*11.8in |
| Packing Weight: | 6kg/13.2lb |

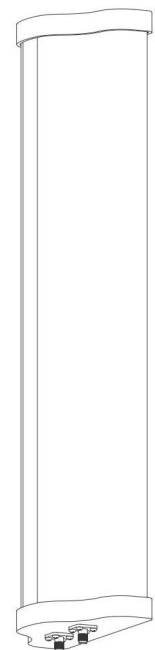
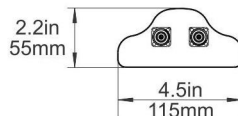
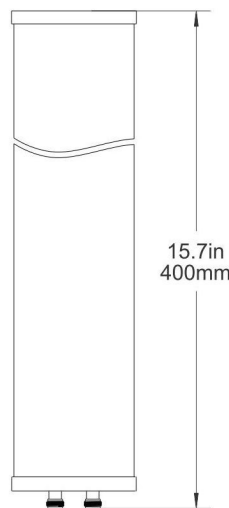
PA5150-5850-90-16HV-2S



H-Plane



V-Plane



Email: sales@dmswireless.com
www.dmswireless.com

Notice: Specifications are subject to change without notice.
Images may not reflect the actual product.