

# DMS Wireless

**2300-2700 MHz 120° V-POL**

## Electrical Data

Frequency:	2300-2700 MHz
Gain:	17 dBi
VSWR:	<1.5:1
Polarization:	Vertical
Horizontal Beamwidth :	120°
Vertical Beamwidth:	3.5°
Nominal Impedance:	50 Ohms
F/B Ratio:	>20 dB
Max Input Power:	100 W
Lightning Protection:	DC Ground

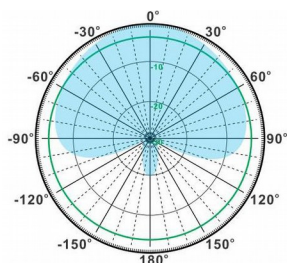
## Mechanical Data

Connector :	N Female
Dimensions:	1976*164*65mm
length*width*height	/77.8*6.5*2.6in
Weight:	6kg/13.2lb
Reflector Material:	Aluminum Alloy
Radome Material:	UV Resistance PVC
Mounting Method:	Mast
Mast Size:	Ø40-Ø70mm
Rated Wind Velocity:	210km/h
Operating temperature:	-40~+65°C

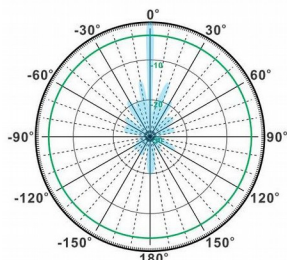
## Shipment Data

Packing Qty:	1 pc/Carton
Carton Size:	2240*220*135mm
(length*width*height)	88.2*8.7*5.3in
Packing Weight:	7kg/15.4lb

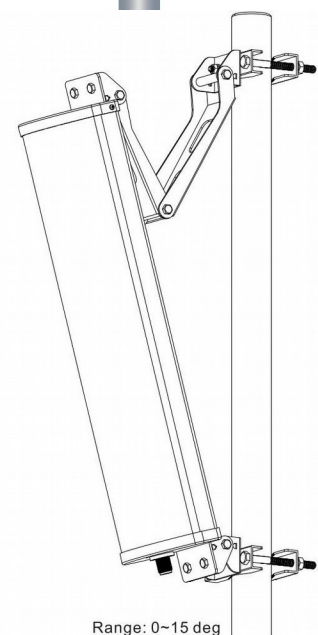
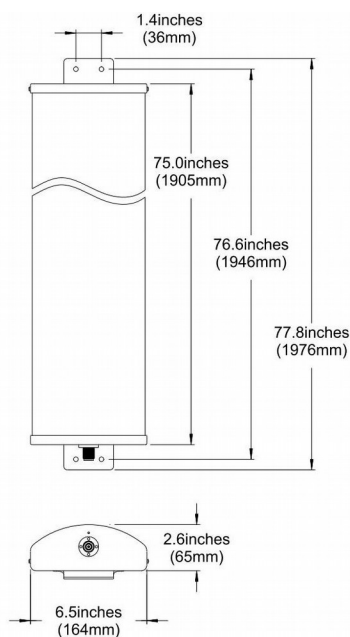
**PA2300-2700-120-17V**



H-Plane



V-Plane



Range: 0~15 deg

Email: [sales@dmswireless.com](mailto:sales@dmswireless.com)  
[www.dmswireless.com](http://www.dmswireless.com)

Notice: Specifications are subject to change without notice.  
 Images may not reflect the actual product.