

1920-2170 MHz V-POL

Electrical Data

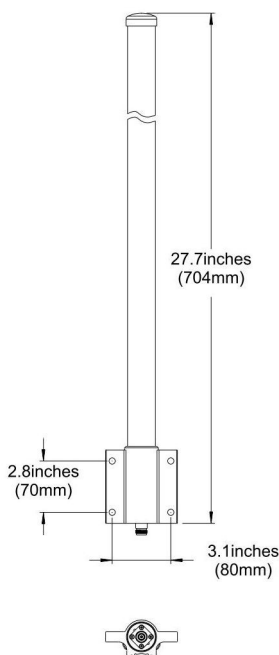
Frequency:	1920-2170 MHz
Gain:	9 dBi
VSWR:	<1.5:1
Polarization:	Vertical
Horizontal Beamwidth :	360°
Vertical Beamwidth:	7°
Nominal Impedance:	50 Ohms
Max Input Power:	100 W
Lightning Protection:	DC Ground

Mechanical Data

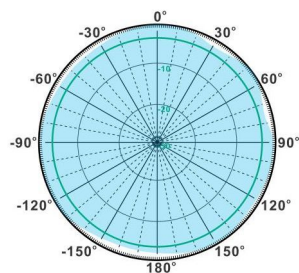
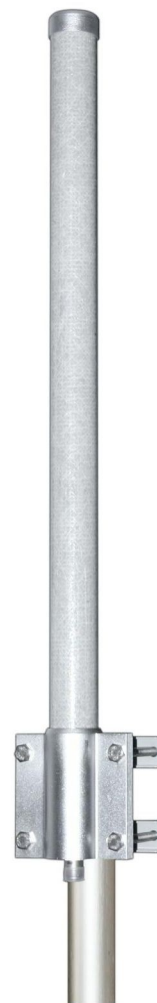
Connector :	N Female
Dimensions:	Ø38*704cm
(diameter*length)	Ø1.5*27.7in
Weight:	1.5kg/3.3lb
Reflector Material:	Brass
Radome Material:	Fiberglass
Mounting Method:	Mast
Mast Size:	Ø40-Ø60mm
Rated Wind Velocity:	210km/h
Operating temperature:	-40~+65°C

Shipment Data

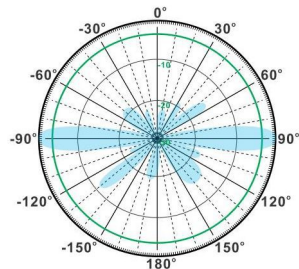
Packing Qty:	2pcs/Carton
Carton Size:	Ø120*800mm
(length*width*height)	Ø4.7*31.5in
Packing Weight:	4.6kg/10.1lb



OM1920-2170-9V



H-Plane



V-Plane

Email: sales@dmswireless.com
www.dmswireless.com

Notice: Specifications are subject to change without notice.
 Images may not reflect the actual product.