

# DMS Wireless

**2400-2483 MHz 90° V-POL**

## Electrical Data

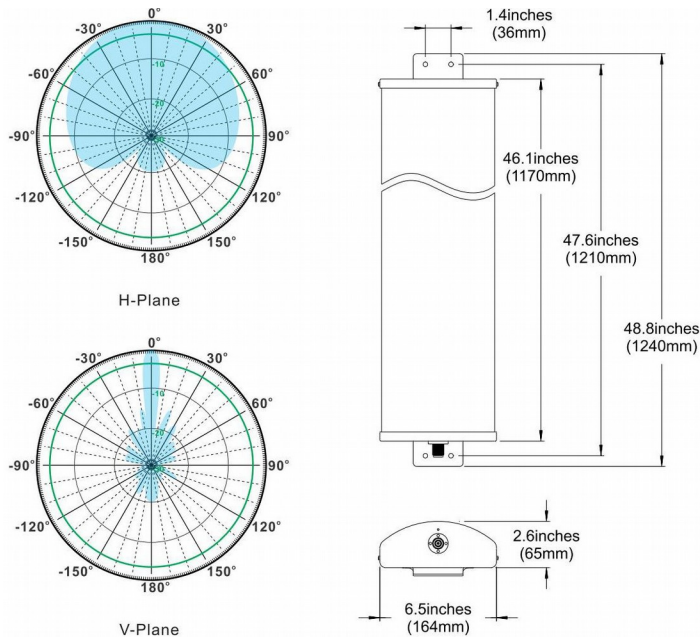
Frequency:	2400-2483 MHz
Gain:	16 dBi(antenna)+15 dB(amplifier)
VSWR:	<1.5:1
Polarization:	Vertical
Horizontal Beamwidth :	90°
Vertical Beamwidth:	8°
Nominal Impedance:	50 Ohms
F/B Ratio:	≥20 dB
Auto TX/RX switching:	Yes
Input Power:	3 dBm-20 dBm(Typ.) 10 dBm-14 dBm(best for 11g)
Output Power:	46 dBm for 11g (MAX)
Noise Figure:	3.5 dB
Operating Temp.:	-40~70°C
AC Adapter:	12V 1.5A
Lightning Protection:	DC Ground

## Mechanical Data

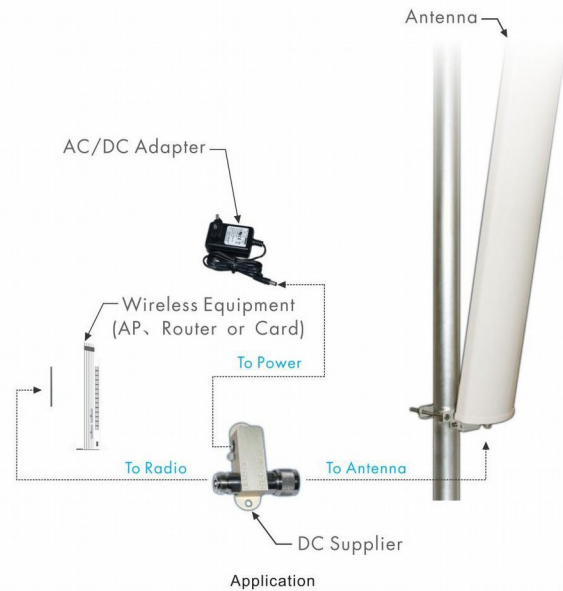
Connector :	N Female
Dimensions:	1240*165*70mm
length*width*height	/48.8*6.5*2.8in
Weight:	4.1kg/9.0lb
Reflector Material:	Aluminum Alloy
Radome Material:	UV Resistance PVC
Mounting Method:	Mast
Mast Size:	Ø40-Ø70mm
Rated Wind Velocity:	210km/h
Operating temperature:	-40~+65°C

## Shipment Data

Packing Qty:	1 pc/ Carton
Carton Size:	1500*200*110mm
(length*width*height)	/59.1*7.9*4.3in
Packing Weight:	5kg/11lb



## PA2400-2483-90-16+15V



Email: [sales@dmswireless.com](mailto:sales@dmswireless.com)  
[www.dmswireless.com](http://www.dmswireless.com)

Notice: Specifications are subject to change without notice.  
 Images may not reflect the actual product.