

DMS Wireless

2400-2483 MHz H-POL or V-POL

Electrical Data

Frequency:	2400-2483 MHz
Gain:	17 dBi
VSWR:	<1.5:1
Polarization:	Horizontal or Vertical
Horizontal Beamwidth :	25°
Vertical Beamwidth:	24°
Nominal Impedance:	50 Ohms
F/B Ratio:	> 18 dB
Max Input Power:	100 W
Lightning Protection:	DC Ground

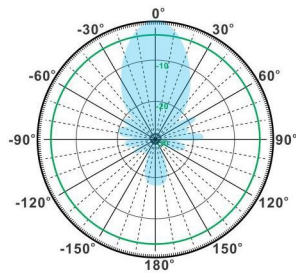
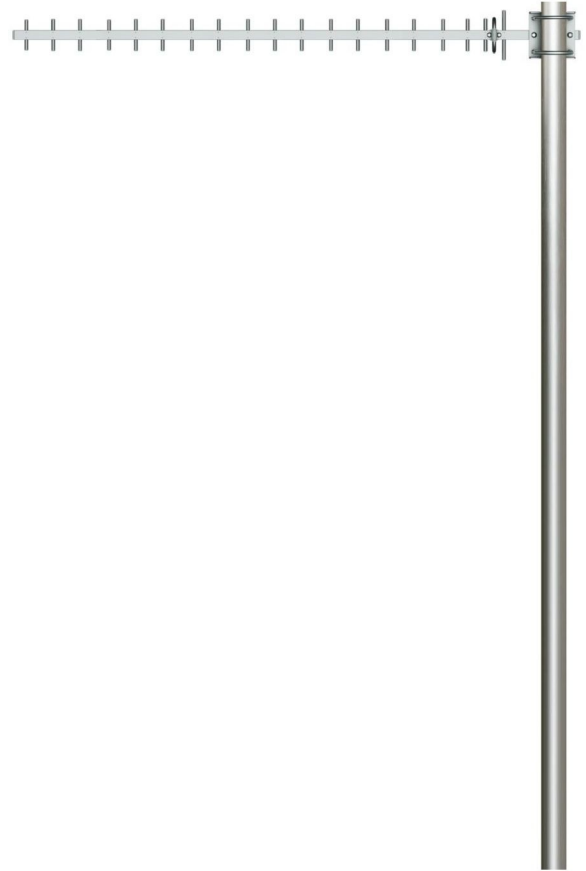
Mechanical Data

Connector :	N Female
Dimensions:	890mm/35.0in
Weight:	0.5kg/1.0lb
Cable Length:	240mm/9.45in
Reflector Material:	Aluminum Alloy
Mounting Method:	Mast
Mast Size:	Ø40-Ø50mm
Rated Wind Velocity:	210km/h
Operating temperature:	-40~+65°C

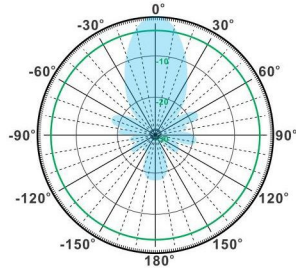
Shipment Data

Packing Qty:	20pcs/Carton
Carton Size:	920*380*265mm
(length*width*height)	/36.2*15.0*10.4in
Packing Weight:	10.2kg/22.4lb

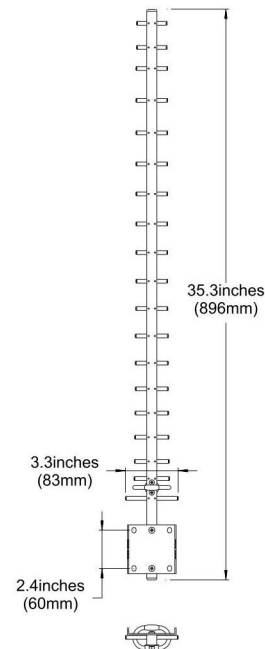
YA2400-2483-17HV-20E



H-Plane



V-Plane



Email: sales@dmswireless.com
www.dmswireless.com

Notice: Specifications are subject to change without notice.
 Images may not reflect the actual product.