

698-760 MHz 90° V-POL

Electrical Data

Frequency:	698-760 MHz
Gain:	16 dBi
VSWR:	<1.5:1
Polarization:	Vertical
Horizontal Beamwidth :	90°
Vertical Beamwidth:	7.2°
Nominal Impedance:	50 Ohms
F/B Ratio:	>20 dB
Max Input Power:	250 W
Lightning Protection:	DC Ground

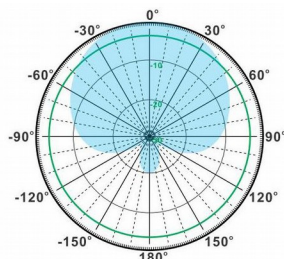
Mechanical Data

Connector :	N Female
Dimensions:	2981*290*130mm
length*width*height	/117.4*11.4*5.1in
Weight:	22.8kg/50.2lb
Reflector Material:	Aluminum Alloy
Radome Material:	UV Resistance PVC
Mounting Method:	Mast
Mast Size:	Ø50-Ø90mm
Rated Wind Velocity:	210km/h
Operating temperature:	-40~+65°C

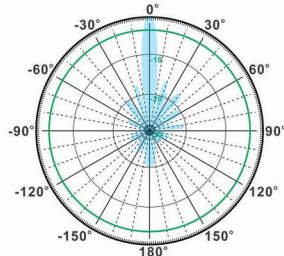
Shipment Data

Packing Qty:	1pc/Carton
Carton Size:	3380*330*195mm
(length*width*height)	/133.1*13.0*7.7in
Packing Weight:	24kg/52.8lb

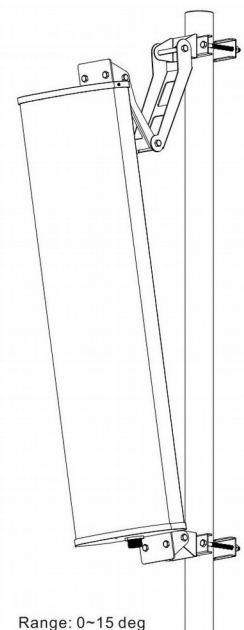
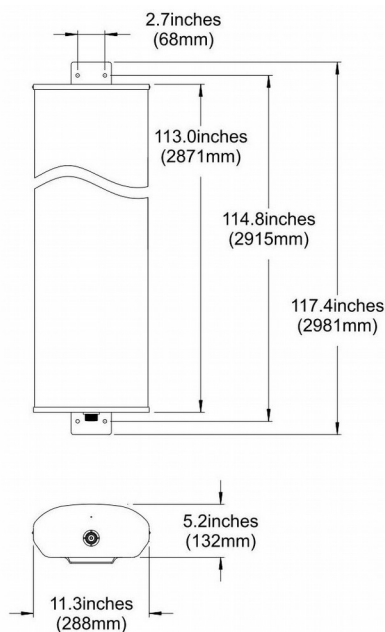
PA698-760-90-16V



H-Plane



V-Plane



Range: 0~15 deg

Email: sales@dmswireless.com
www.dmswireless.com

Notice: Specifications are subject to change without notice.
 Images may not reflect the actual product.