

DMS Wireless

2400-2480 MHz 90° VV-POL

PA2400-2480-90-17VV

Electrical Data

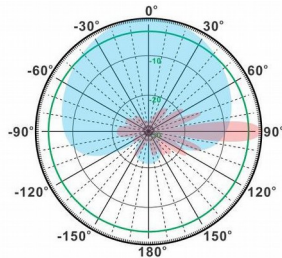
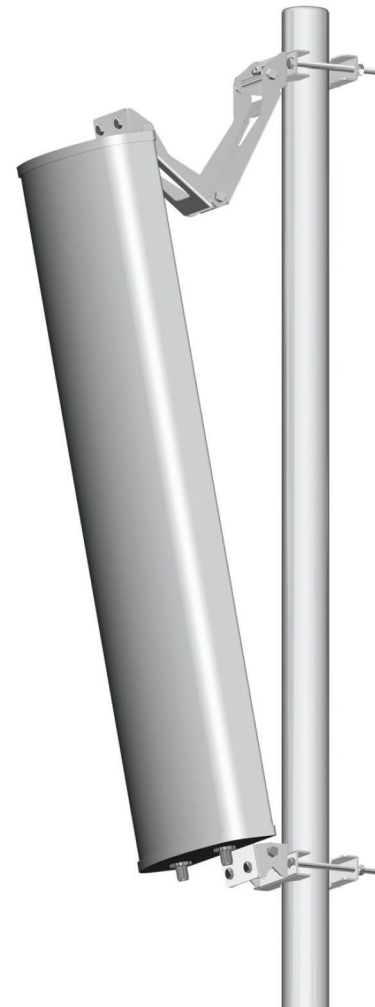
Frequency:	2400-2483 MHz
Gain:	17 dBi
VSWR:	<1.5:1
Polarization:	Vertical and Vertical
Horizontal Beamwidth:	90°
Vertical Beamwidth:	8°
Electrical downtilt:	0°
Sidelobe suppression :	>15dB
(First sidelobe above main beam)	
Front-to-back ratio :	>20dB
Isolation:	>30dB
Cross-polar ratio:	>15dB ($\pm 60^\circ \geq 10$)
Intermodulation IM3:	>-150dBc
(2x43dBm carrier)	
Impedance:	50 Ohms
Max Input Power:	100W
Lightning Protection:	DC Ground

Mechanical Data

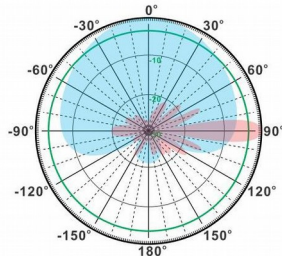
Connector :	2*N Female
Connector position:	Bottom
Dimensions:	960*265*94mm
length*width*height	37.8*10.4*3.7in
Weight:	4.1kg/9.03lb
Reflector Material:	Aluminum Alloy
Radome Material:	UV Resistance PVC
Mounting Method:	Mast
Mast Size:	Ø40-Ø70mm
Rated Wind Velocity:	210km/h
Operating temperature:	-40~+65°C

Shipment Data

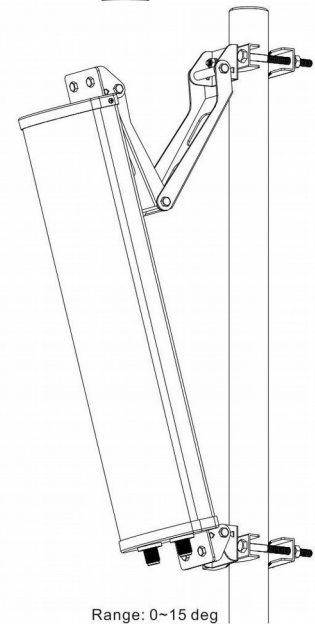
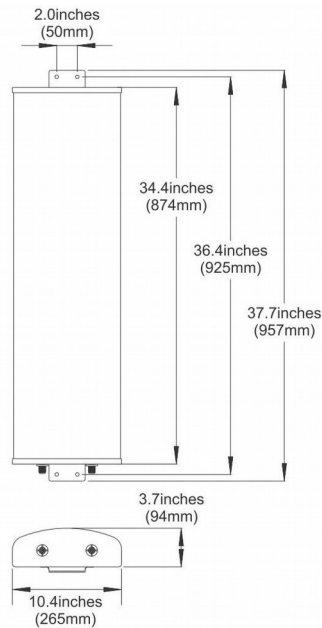
Packing Qty:	1pc/Carton
Carton Size:	1090*330*150mm
(length*width*height)	42.9*13.0*5.9in
Packing Weight:	5kg/11lb



H-Plane



V-Plane



Email: sales@dmswireless.com
www.dmswireless.com

Notice: Specifications are subject to change without notice.
 Images may not reflect the actual product.