

DMS Wireless

806-960 MHz 120° V-POL

Electrical Data

Frequency:	806-960 MHz
Gain:	11 dBi
VSWR:	<1.5:1
Polarization:	Vertical
Horizontal Beamwidth :	120°
Vertical Beamwidth:	26°
Nominal Impedance:	50 Ohms
F/B Ratio:	>18 dB
Max Input Power:	250 W
Lightning Protection:	DC Ground

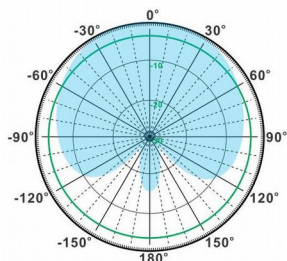
Mechanical Data

Connector :	N Female
Dimensions:	694*290*130mm
length*width*height	/27.3*11.4*5.1in
Weight:	9.5kg/20.9lb
Reflector Material:	Aluminum Alloy
Radome Material:	UV Resistance PVC
Mounting Method:	Mast
Mast Size:	Ø50-Ø90mm
Rated Wind Velocity:	210km/h
Operating temperature:	-40~+65°C

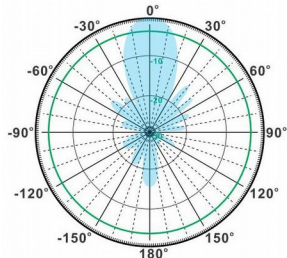
Shipment Data

Packing Qty:	1pc/Carton
Carton Size:	1110*330*195mm
(length*width*height)	43.7*13.0*7.7in
Packing Weight:	11.2kg/24.7lb

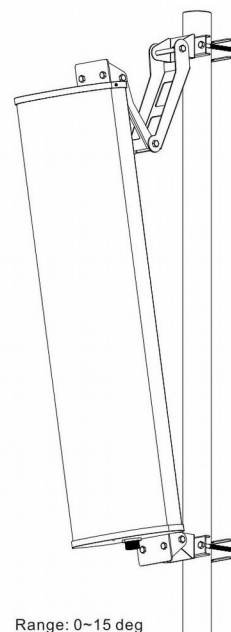
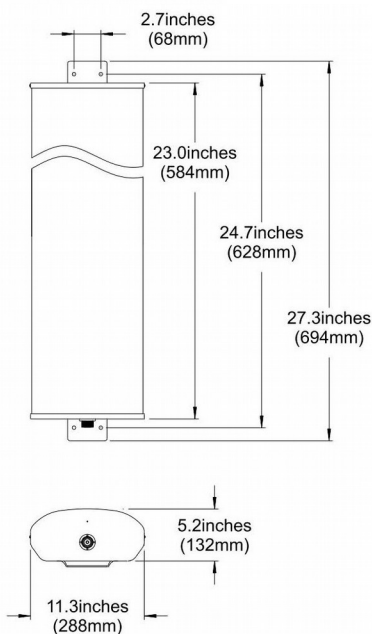
PA806-960-120-11V



H-Plane



V-Plane



Range: 0~15 deg

Email: sales@dmswireless.com
www.dmswireless.com

Notice: Specifications are subject to change without notice.
Images may not reflect the actual product.