

DMS Wireless

824-960 MHz H-POL or V-POL

Electrical Data

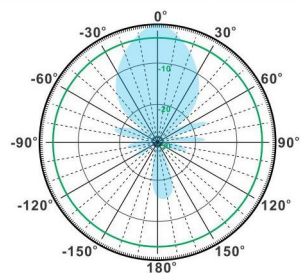
Frequency:	824-960 MHz
Gain:	16 dBi
VSWR:	<1.5:1
Polarization:	Horizontal Or Vertical
Horizontal Beamwidth :	27°
Vertical Beamwidth:	23°
Nominal Impedance:	50 Ohms
F/B Ratio:	>16 dB
Max Input Power:	100 W
Lightning Protection:	DC Ground

Mechanical Data

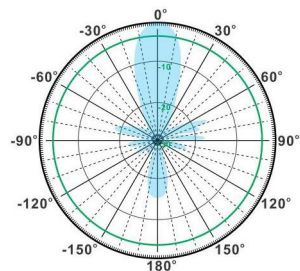
Connector :	N Female
Dimension:	1420mm/55.9in
Weight:	0.6kg/1.3lb
Cable Length:	300mm/11.8in
Reflector Material:	Aluminum Alloy
Antenna Material:	Mast
Mast Size:	Ø40-Ø50mm
Rated Wind Velocity:	210km/h
Operating temperature:	-40~+65°C

Shipment Data

Packing Qty:	10pcs/Carton
Carton Size:	1435*395*330mm
(length*width*height)	56.5*15.55*12.99in
Packing Weight:	7.5kg/16.52lb

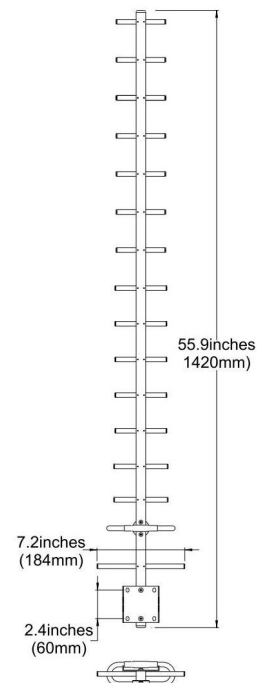
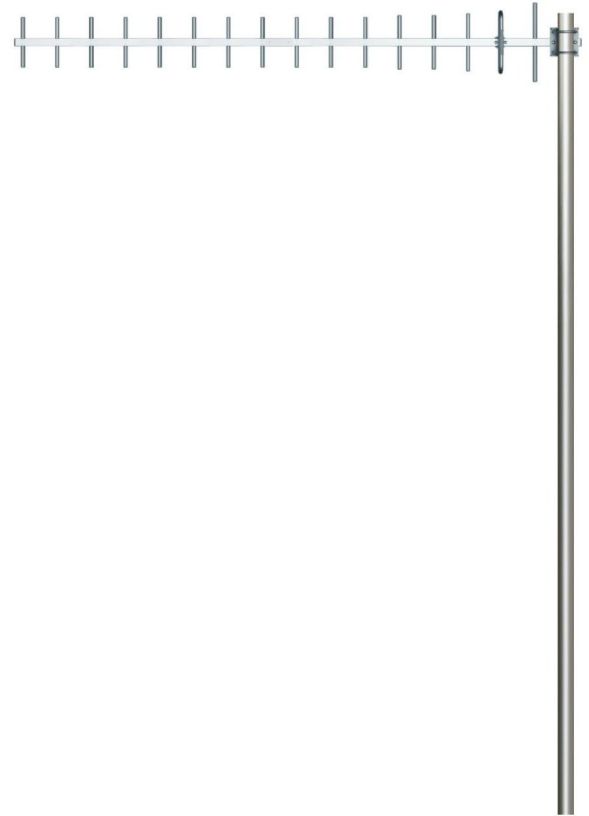


H-Plane



V-Plane

YA824-960-16HV-16E



Email: sales@dmswireless.com
www.dmswireless.com

Notice: Specifications are subject to change without notice.
Images may not reflect the actual product.