

890-960 MHz V-POL

Electrical Data

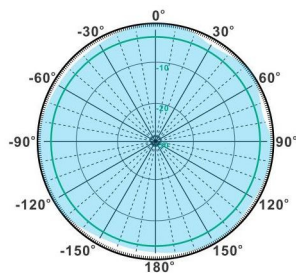
Frequency:	890-960 MHz
Gain:	7 dBi
VSWR:	<2.0:1
Polarization:	Vertical
Horizontal Beamwidth :	360°
Vertical Beamwidth:	18°
Nominal Impedance:	50 Ohms
Max Input Power:	100 W
Lightning Protection:	DC Ground

Mechanical Data

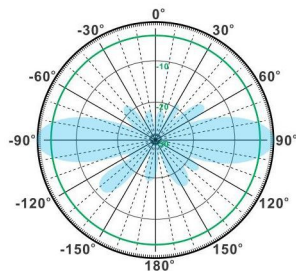
Connector :	N Female
Dimensions:	Ø38*1795mm
(diameter*length)	Ø1.5*70.7in
Weight:	2.4kg/5.3lb
Reflector Material:	Brass
Radome Material:	Fiberglass
Mounting Method:	Mast
Mast Size:	Ø40-Ø60mm
Rated Wind Velocity:	210km/h
Operating temperature:	-40~+65°C

Shipment Data

Packing Qty:	2pcs/Carton
Carton Size:	1840*110*100mm
(length*width*height)	72.4*4.3*3.9in
Packing Weight:	6.9kg/15.2lb

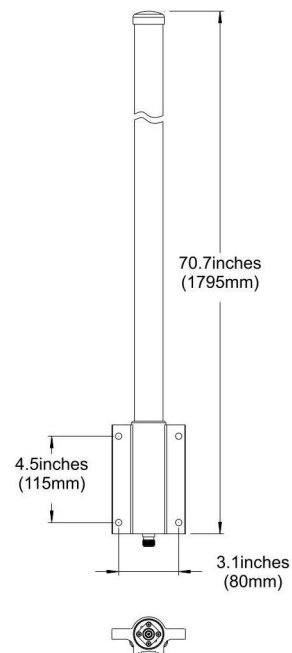
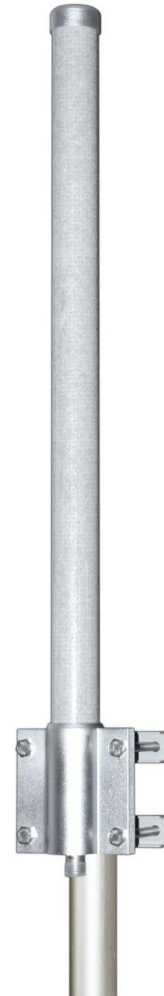


H-Plane



V-Plane

OM890-960-7V



Email: sales@dmswireless.com
www.dmswireless.com

Notice: Specifications are subject to change without notice.
 Images may not reflect the actual product.