

DMS Wireless

2400-2483 MHz H-POL

Electrical Data

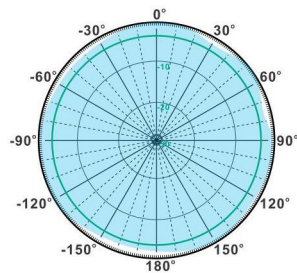
| | |
|------------------------|---------------|
| Frequency: | 2400-2483 MHz |
| Gain: | 12 dBi |
| VSWR: | <1.5:1 |
| Polarization: | Horizontal |
| Horizontal Beamwidth : | 360° |
| Vertical Beamwidth: | 7.2° |
| Nominal Impedance: | 50 Ohms |
| Max Input Power: | 100 W |
| Lightning Protection: | DC Ground |

Mechanical Data

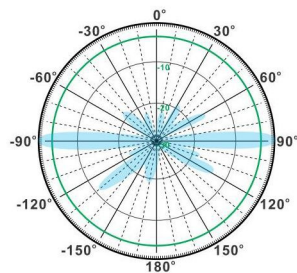
| | |
|------------------------|------------------|
| Connector : | N Female |
| Dimensions: | 1300*100*45mm |
| (length*width*height) | /51.18*3.9*1.8in |
| Weight: | 1.9kg/4.3lb |
| Reflector Material: | Brass |
| Mounting Method: | Mast |
| Mast Size: | Ø40-Ø60mm |
| Rated Wind Velocity: | 210km/h |
| Operating temperature: | -40~+65°C |

Shipment Data

| | |
|-----------------------|------------------|
| Packing Qty: | 5pcs/Carton |
| Carton Size: | 1360*380*135mm |
| (length*width*height) | /53.5*15.0*5.3in |
| Packing Weight: | 11.5kg/25.3lb |

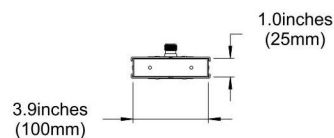
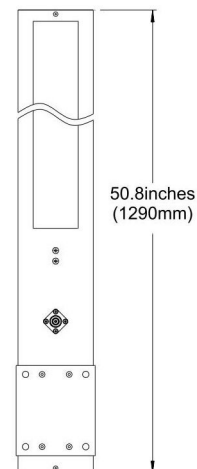


H-Plane



V-Plane

OM2400-2483-12H



Email: sales@dmswireless.com
www.dmswireless.com

Notice: Specifications are subject to change without notice.
Images may not reflect the actual product.