

# DMS Wireless

**2400-2483 MHz H-POL or V-POL**

## Electrical Data

Frequency:	2400-2483 MHz
Gain:	15 dBi
VSWR:	<1.5:1
Polarization:	Horizontal or Vertical
Horizontal Beamwidth :	30°
Vertical Beamwidth:	25°
Nominal Impedance:	50 Ohms
F/B Ratio:	>16 dB
Max Input Power:	100 W
Lightning Protection:	DC Ground

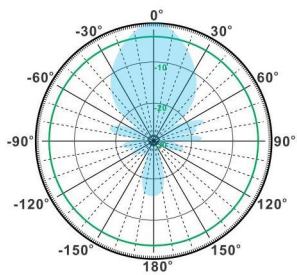
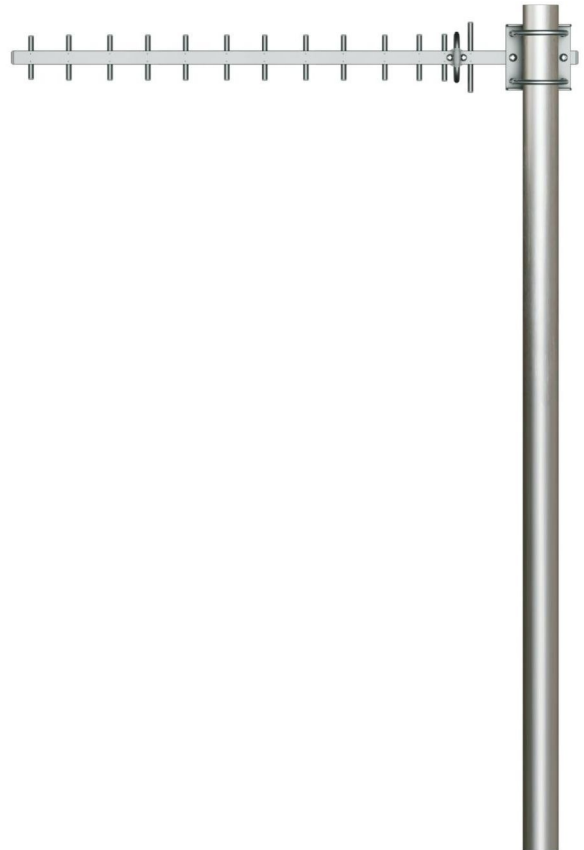
## Mechanical Data

Connector :	N Female
Dimensions:	630mm/24.81in
Weight:	0.4kg/0.9lb
Cable Length:	240mm/9.5in
Reflector Material:	Aluminum Alloy
Mounting Method:	Mast
Mast Size:	Ø40-Ø50mm
Rated Wind Velocity:	210km/h
Operating temperature:	-40~+65°C

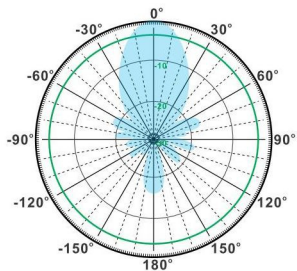
## Shipment Data

Packing Qty:	20pcs/Carton
Carton Size:	660*380*270mm
(length*width*height)	/26.0*15.0*10.6in
Packing Weight:	9.6kg/21.1lb

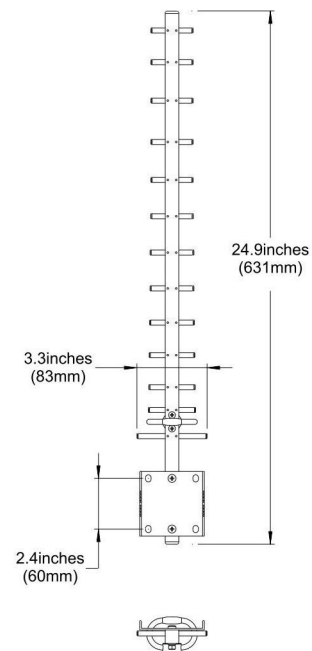
## YA2400-2483-15HV-14E



H-Plane



V-Plane



Email: [sales@dmswireless.com](mailto:sales@dmswireless.com)  
[www.dmswireless.com](http://www.dmswireless.com)

Notice: Specifications are subject to change without notice.  
 Images may not reflect the actual product.