

DMS Wireless

890-960 MHz H-POL or V-POL

Electrical Data

Frequency:	890-960 MHz
Gain:	14 dBi
VSWR:	<1.5:1
Polarization:	Horizontal or Vertical
Horizontal Beamwidth :	31°
Vertical Beamwidth:	29°
Nominal Impedance:	50 Ohms
F/B Ratio:	>16 dB
Max Input Power:	100 W
Lightning Protection:	DC Ground

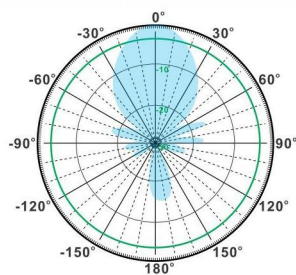
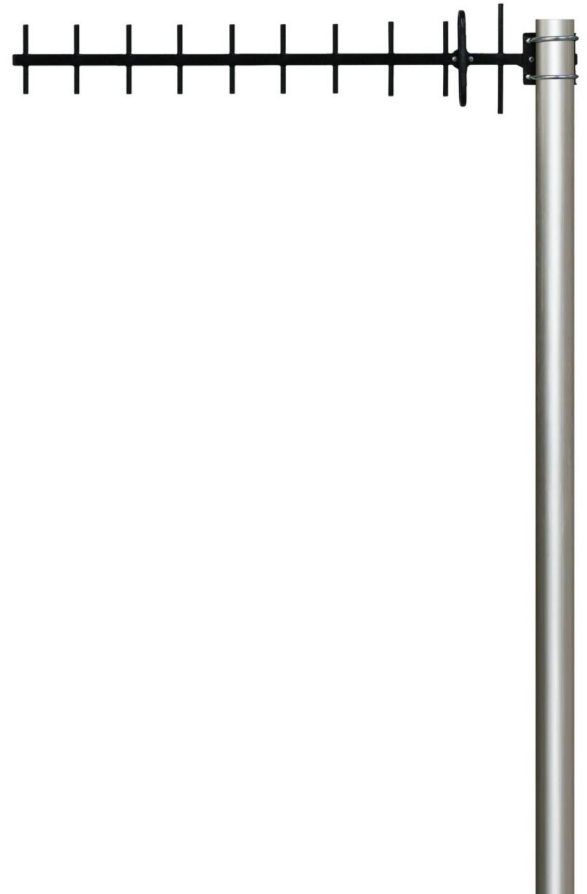
Mechanical Data

Connector :	N Female
Dimensions:	1080mm/42.5in
Weight:	1.2kg/2.6lb
Cable Length:	300mm/11.8in
Reflector Material:	Aluminum Alloy
Antenna Material:	Stainless Steel
Mounting Method:	Mast
Mast Size:	Ø40-Ø50mm
Rated Wind Velocity:	210km/h
Operating temperature:	-40~+65°C

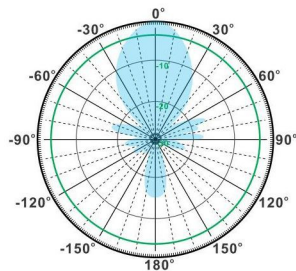
Shipment Data

Packing Qty:	5pcs/Carton
Carton Size:	1110*430*270mm
(length*width*height)	/43.7*16.9*10.6in
Packing Weight:	7kg/15.4lb

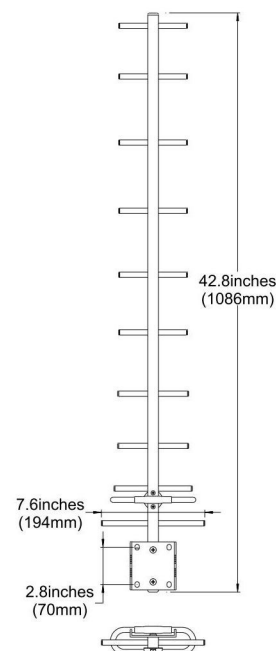
YA890-960-14HV-11EW



H-Plane



V-Plane



Email: sales@dmswireless.com
www.dmswireless.com

Notice: Specifications are subject to change without notice.
Images may not reflect the actual product.