

# DMS Wireless

**1850-1960 MHz V-POL**

## Electrical Data

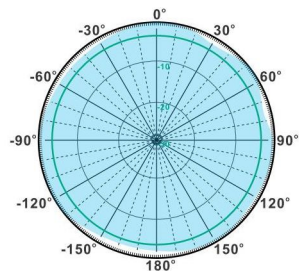
Frequency:	1850-1960 MHz
Gain:	6 dBi
VSWR:	<1.5:1
Polarization:	Vertical
Horizontal Beamwidth :	360°
Vertical Beamwidth:	32°
Nominal Impedance:	50 Ohms
Max Input Power:	100 W
Lightning Protection:	DC Ground

## Mechanical Data

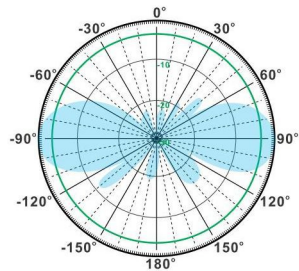
Connector :	N Female
Dimensions:	Ø20*600mm
(diameter*length)	Ø0.8*23.6in
Weight:	0.3kg/0.7lb
Reflector Material:	Brass
Radome Material:	Fiberglass
Mounting Method:	Mast
Mast Size:	Ø40-Ø60mm
Rated Wind Velocity:	210km/h
Operating temperature:	-40~+65°C

## Shipment Data

Packing Qty:	40pcs/Carton
Carton Size:	700*345*245mm
(length*width*height)	27.6*13.6*9.7in
Packing Weight:	14.5kg/31.9lb

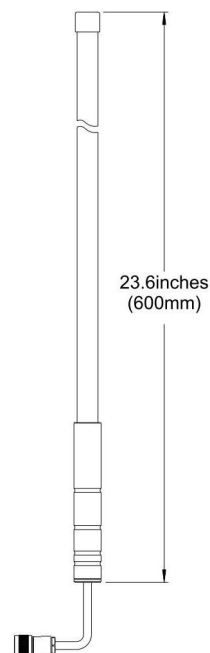
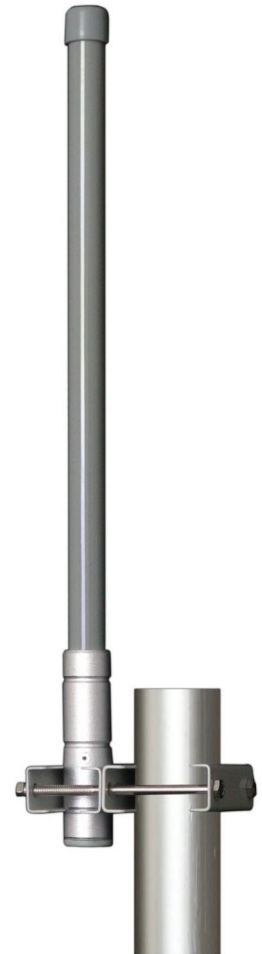


H-Plane



V-Plane

## OM1850-1960-6V



Email: [sales@dmswireless.com](mailto:sales@dmswireless.com)  
[www.dmswireless.com](http://www.dmswireless.com)

Notice: Specifications are subject to change without notice.  
Images may not reflect the actual product.