

DMS Wireless

896-960 MHz H-POL or V-POL

Electrical Data

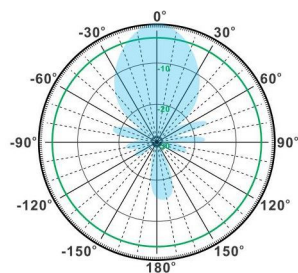
Frequency:	896-960 MHz
Gain:	16 dBi
VSWR:	<1.5:1
Polarization:	Horizontal or Vertical
Horizontal Beamwidth :	32°
Vertical Beamwidth:	30°
Nominal Impedance:	50 Ohms
F/B Ratio:	>16 dB
Max Input Power:	100 W
Lightning Protection:	DC Ground

Mechanical Data

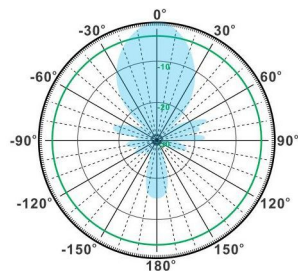
Connector :	N Female
Dimensions:	1400mm/55.1in
Weight:	1.6kg/3.5lb
Cable Length:	300mm/11.8in
Reflector Material:	Aluminum Alloy
Antenna Material:	Stainless Steel
Mounting Method:	Mast
Mast Size:	Ø40-Ø50mm
Rated Wind Velocity:	210km/h
Operating temperature:	-40~+65°C

Shipment Data

Packing Qty:	10pcs/Carton
Carton Size:	1450*390*325mm
(length*width*height)	/57.1*15.4*12.8in
Packing Weight:	17kg/37.4lb

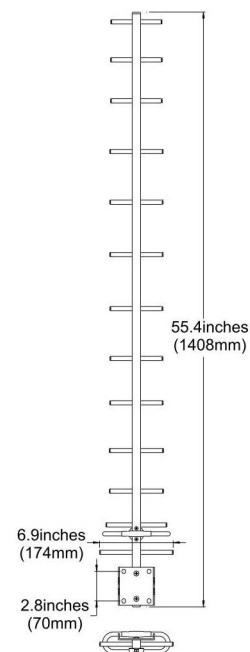


H-Plane



V-Plane

YA890-960-16HV-14EW



Email: sales@dmswireless.com
www.dmswireless.com

Notice: Specifications are subject to change without notice.
Images may not reflect the actual product.