

DMS Wireless

2400-2483 MHz 120° HV-POL

PA2400-2483-120-16HV

Electrical Data

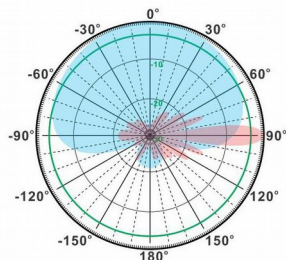
Frequency:	2400-2483 MHz
Gain:	16 dBi
VSWR:	<1.5:1
Polarization:	Horizontal and Vertical
Horizontal Beamwidth:	120°
Vertical Beamwidth:	6°
Electrical downtilt:	0°
Sidelobe suppression : (First sidelobe above main beam)	>15dB
Front-to-back ratio :	>20dB
Isolation:	>30dB
Cross-polar ratio:	>15dB ($\pm 60^\circ \geq 10$)
Intermodulation IM3: (2x43dBm carrier)	>-150dBc
Impedance:	50 Ohms
Max Input Power:	100W
Lightning Protection:	DC Ground

Mechanical Data

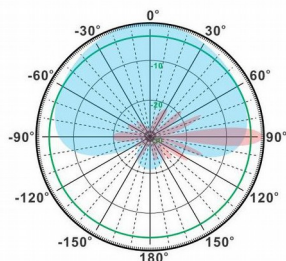
Connector :	2*N Female
Connector position:	Bottom
Dimensions:	1250*134.5*64mm
length*width*height	49.2*5.3*2.5in
Weight:	4kg/8.8lb
Reflector Material:	Aluminum Alloy
Radome Material:	UV Resistance PVC
Mounting Method:	Mast
Mast Size:	Ø40-Ø70mm
Rated Wind Velocity:	210km/h
Operating temperature:	-40~+65°C

Shipment Data

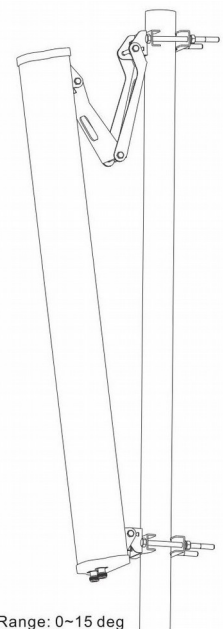
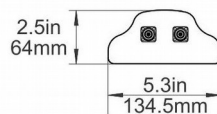
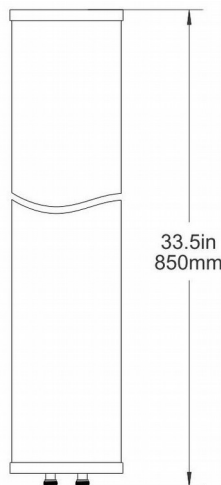
Packing Qty:	1pc/Carton
Carton Size:	1280*190*160mm
(length*width*height)	50.4*7.5*6.3in
Packing Weight:	5kg/11lb



H-Plane



V-Plane



Range: 0~15 deg

Email: sales@dmswireless.com
www.dmswireless.com

Notice: Specifications are subject to change without notice.
 Images may not reflect the actual product.