

DMS Wireless

1850-1960 MHz H-POL or V-POL

Electrical Data

Frequency:	1850-1960 MHz
Gain:	14 dBi
VSWR:	<1.5:1
Polarization:	Horizontal or Vertical
Horizontal Beamwidth :	35°
Vertical Beamwidth:	31°
Nominal Impedance:	50 Ohms
F/B Ratio:	>16 dB
Max Input Power:	100 W
Lightning Protection:	DC Ground

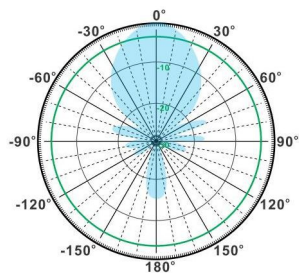
Mechanical Data

Connector :	N Female
Dimensions:	545mm/21.5in
Weight:	0.4kg/0.8lb
Cable Length:	360mm/14.2in
Reflector Material:	Aluminum Alloy
Mounting Method:	Mast
Mast Size:	Ø40-Ø50mm
Rated Wind Velocity:	210km/h
Operating temperature:	-40~+65°C

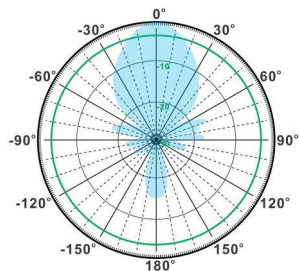
Shipment Data

Packing Qty:	20pcs/Carton
Carton Size:	575*465*275mm
(length*width*height)	/22.6*18.3*10.8in
Packing Weight:	9.2kg/20.3lb

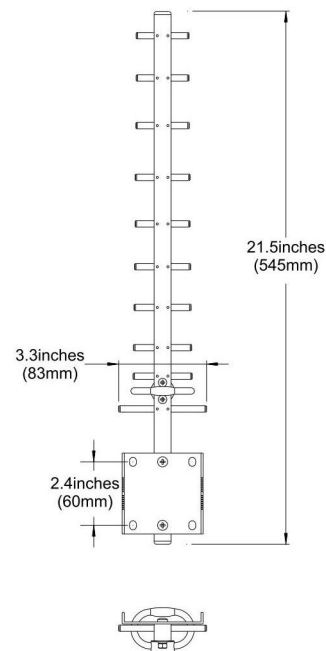
YA1850-1960-14HV-11E



H-Plane



V-Plane



Email: sales@dmswireless.com
www.dmswireless.com

Notice: Specifications are subject to change without notice.
Images may not reflect the actual product.