

DMS Wireless

1710-1880 MHz 120° V-POL

Electrical Data

Frequency:	1710-1880 MHz
Gain:	13 dBi
VSWR:	<1.5:1
Polarization:	Vertical
Horizontal Beamwidth :	120°
Vertical Beamwidth:	14°
Nominal Impedance:	50 Ohms
F/B Ratio:	>20 dB
Max Input Power:	100 W
Lightning Protection:	DC Ground

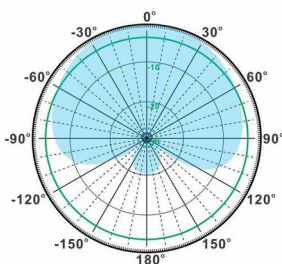
Mechanical Data

Connector :	N Female
Dimensions:	810*180*100mm
length*width*height	/31.89*7.09*3.94in
Weight:	3.7kg/7.49lb
Reflector Material:	Aluminum Alloy
Radome Material:	UV Resistance PVC
Mounting Method:	Mast
Mast Size:	Ø40-Ø70mm
Rated Wind Velocity:	210km/h
Operating temperature:	-40~+65°C

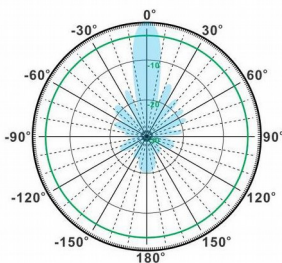
Shipment Data

Packing Qty:	1 pc/Carton
Carton Size:	1070*220*135cm
(length*width*height)	/42.13*8.66*5.31 in
Packing Weight:	5kg/11.01lb

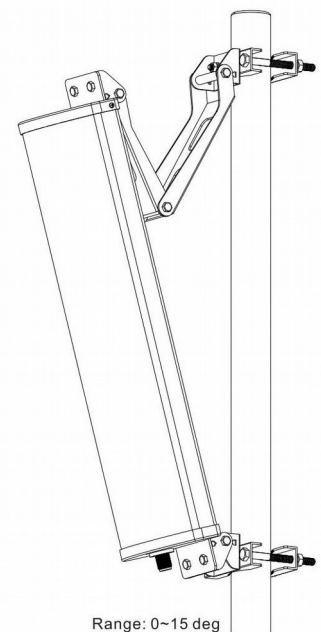
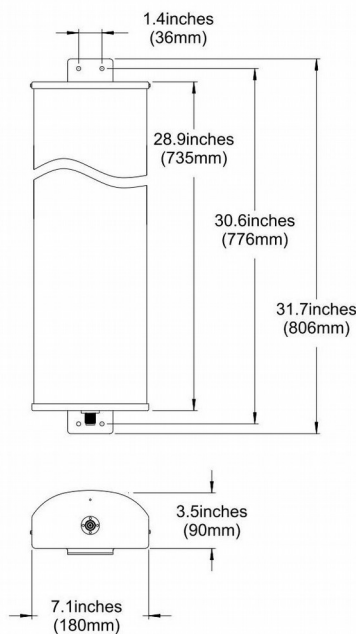
PA1710-1880-120-13V



H-Plane



V-Plane



Range: 0~15 deg

Email: sales@dmswireless.com
www.dmswireless.com

Notice: Specifications are subject to change without notice.
Images may not reflect the actual product.