



1427 MHz Yagi Directional Antennas
DMS WIRELESS announces Yagi Antennas Available

DMS WIRELESS is your source for 1427 MHz antennas: Heavy Duty Welded Yagi Antennas and Omni Directionals Antennas.

Stock available for the Extreme Environment Heavy Duty Yagis: 9, and 14 dBi models with 25' LMR 400 attached. These stainless steel black powder coated antennas are constructed for use where wind, snow, rain, moisture and coastal areas are prevalent in the field installations. Thousands now in use for the oil and gas industry make this welded yagi the preferred choice for reliability and durability.

VSWR, Front to Back Ratio, Beamwidth specifications exceed industry standards. See website for detailed specifications: www.dmswireless.com

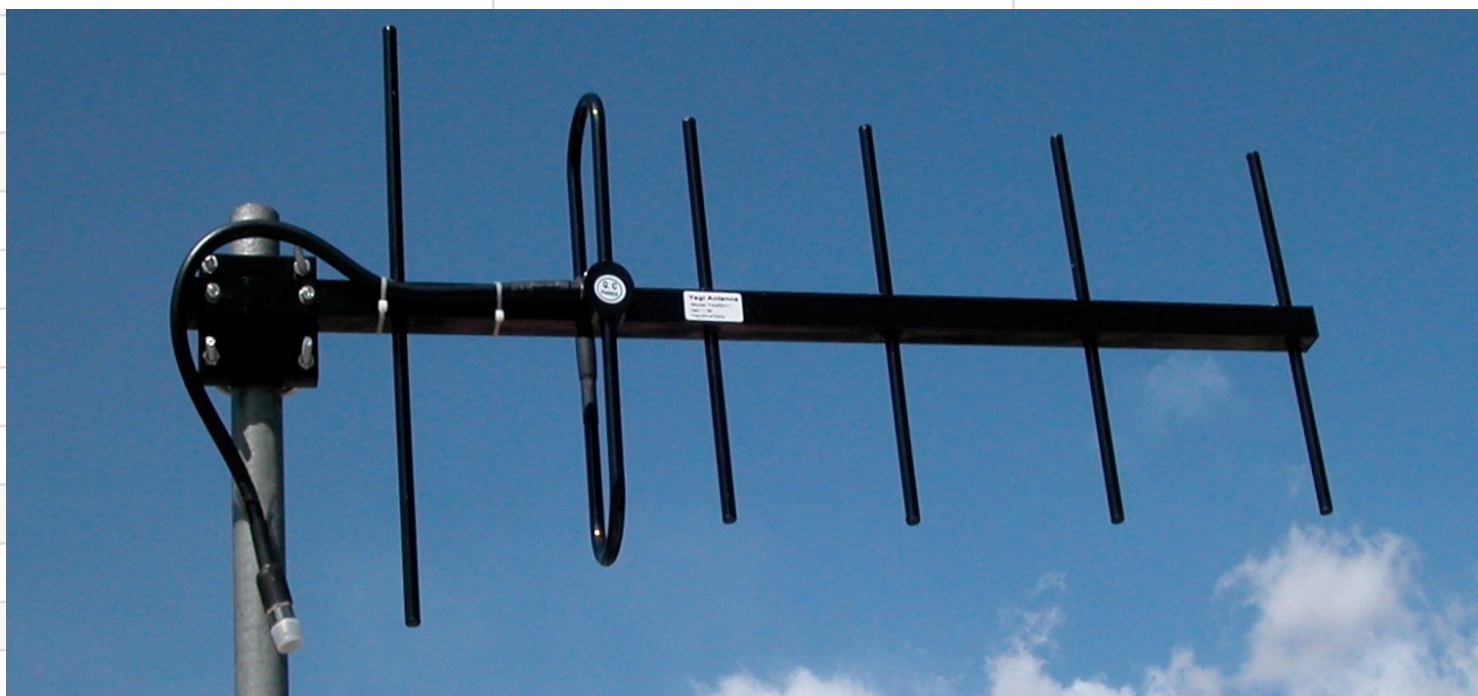
For quick and easy purchase of quality DMS antennas, please contact DMS WIRELESS:
Sales@dmswireless.com

DMS WIRELESS also supplies Sectors, Grids, Omnis, CPE Flat Panels, Yagis, Heavy Duty Yagis, Magnetic Mounts, Rubber Duck Dipoles, Patch Antennas and Universal Mounts.
Visit the Web site www.dmswireless.com

YAGI ANTENNA 1427 - 1432 MHz

4EE SERIES - 4 Extreme Environments

Rugged Construction for the most harsh and severe environments with true to specification RF performance



FEATURES

Heavy Duty Stainless Steel Construction	Solid Iron Mounting Bracket	360 Degree Weld Elements to Boom
Lifetime Warranty Female N Connector	Vertical or Horizontal Polarization	Cable Lengths Available: 2', 15', 25'
PVC Heat Shrink on Connector	Black Polyester Powder Coat Finish	Gains Available: 9, 14 dBi
High Quality LMR400 Cable	Waterproof Gamma Match	Photo not exact model www.dmswireless.com

SPECIFICATIONS

Part Number	YA142709W	YA142714W
Frequency Range	1427 - 1432 MHz	1427 - 1432 MHz
Gain	9 dBi	14 dBi
Front to Back Ratio	15 dB minimum	15 dB minimum
Beamwidth	53H 40V	37H 31V
VSWR	1.5:1 Typical	1.5:1 Typical
Input Impedance	50 Ohms	50 Ohms
Maximum Power	100 Watts	100 Watts
Connector Interface	N Type Female	N Type Female
Windload	210 kmp/130 mph	210 kmp/130 mph
Polarization	Vertical or Horizontal	Vertical or Horizontal
Lightning Protection	Direct Ground	Direct Ground
Structure	7 Elements	14 Elements
Length	20"/498 mm	38"/968 mm
Weight	#/ kg	#/ kg
Mast Sizes Compatible	1.5"-2.0" 40-50 mm	1.5"-2.0" 40-50 mm
Double U Bolt Mounting	S/S Hardware	S/S Hardware
Standard Cable Length	2'/610 mm	2'/610 mm
15' Cable Length	YA142709W-15LMR400	YA142714W-15LMR400
25' Cable Length	YA142709W-25LMR400	YA142714W-25LMR400
		www.dmswireless.com